

GASCYLINDERS marking High-power, precision dot-marking



- High stamping power
- Visible marking under paint layers
- Simple usage
- Simple programming with touch screen
- Robust design
- Secure positioning
- Serial numbers marking and many more function

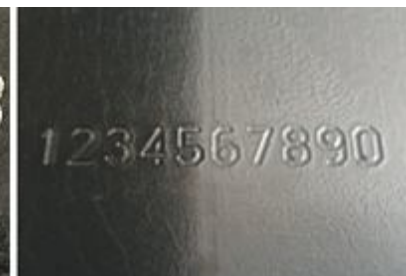
Description:

- High-force impact portable marking machine for deep marking, with electro pneumatic percussion for the marking of metals that need to undergo surface treatment like painting and sandblasting.
- Solution for high hardness metals like CrMo54.
- Programmable separate touch-screen control panel, can be connected to a PC



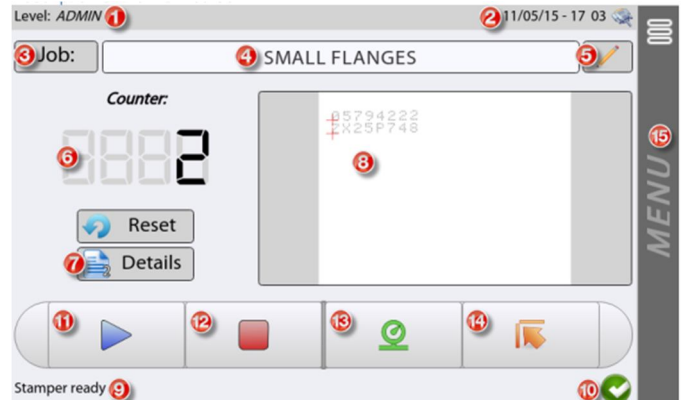
Characteristics:

- Maximum flexibility: high definition, high speed and deep marking
- Indicated for metals, hard metals
- Curved and flat surfaces, with no rotation of the piece
- MARKING AREA 80 x 50 mm



Marking

- Marking of variable text, serial numbers, date and time, logos and drawings (DXF and PLT)
- 20 available native fonts, and true type font
- Programmable size, style and direction of text
- DataMatrix code marking according to NASA specifics



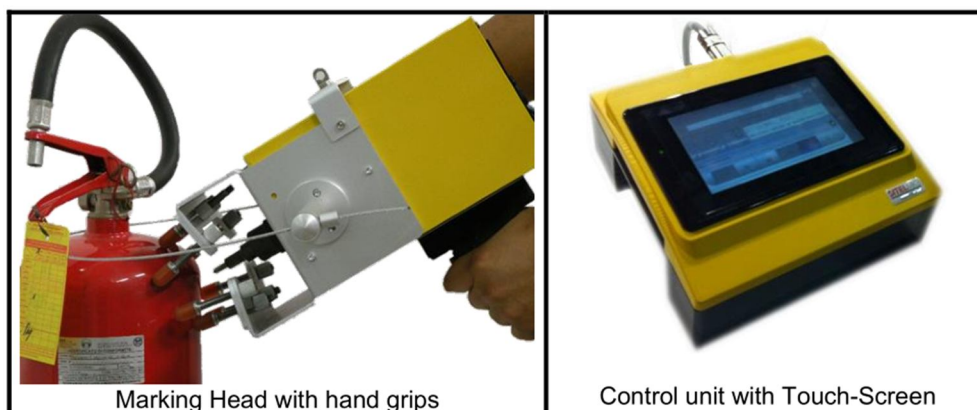
Connections

- Serial PC and Ethernet connections
- USB port for importing and exporting complete marking programs

PWENT Ltd

- Approved Linde supplier
- more than 10 years' experience on gas cylinders marking field

**For demo, for commercial offer,
for your unique marking need please contact us**



Marking Head with hand grips

Control unit with Touch-Screen

Pwent Ltd.
info@pwent.eu
+36 (20) 9273-719